



**PIXEL**

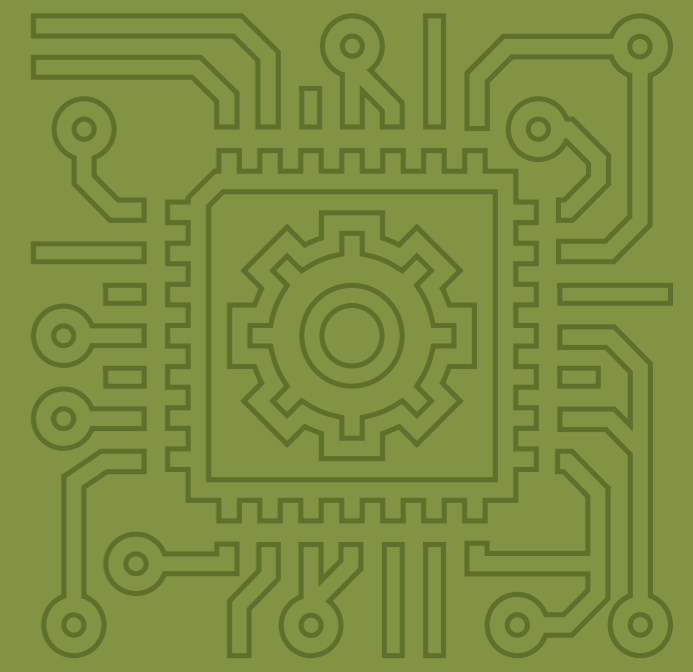
**Video Surveillance System**

**PIXEL Sp. z o.o.**  
ul. Bogdana Raczkowskiego 5  
85-862 Bydgoszcz

**T:** +48 52 324 16 10  
**T:** +48 52 320 99 67  
**T:** +48 52 324 16 13

**E:** pixel@pixel.pl

[www.pixel.pl](http://www.pixel.pl)



**Republic of Poland**



**Kujawsko-Pomorskie Region**

**European Union**  
European Regional Development Fund



**VSS**

A recorder designed for the railway industry with automatic video analysis made possible by implementation of artificial intelligence elements!

To date, PIXEL has manufactured and implemented roughly a thousand complete systems in various configurations, depending on Customers' needs. The newest recorder PVR has been upgraded to include more high-tech functions – data interpretation based on artificial intelligence.

Vehicle surveillance systems in public transport have become a common standard that gives a sense of security to travelling passengers. They also facilitate identification of perpetrators of acts of vandalism and other offences encountered in urban and intercity transport vehicles.



**01**

Our video surveillance system consists of cameras installed inside the vehicle, cameras recording events outside the vehicle, microphones, a digital recorder – PVR, a touch-screen LCD display located in the vehicle driver's compartment and footage management software PxRSS.



**01**

**ON-BOARD CAMERA**



**02**

**EXTERNAL CAMERA**



**03**

**PVR RECORDER**



**04**

**10" TOUCH-SCREEN LCD DISPLAY**

**Digital Recorder PVR**

The digital recorder PVR is the central unit of the video surveillance system – which means that it is the essential element required for installation of a professional system recording video and audio from connected devices – cameras and microphones.



**03**

The main functions of the PVR recorder and therefore of the entire video surveillance system offered by PIXEL include:

- data interpretation by an embedded computer running AI software (for computerised analysis of data from the cameras and detection of events such as potentially dangerous situations)
- support for up to 26 cameras
- multiple-unit train control support
- autodiagnosics signalling whether the system is operating properly and reporting errors, such as a drive or camera failure
- cooperation with PIXEL's footage management software, which allows the user e.g. to search for recordings by applying various filters: events, positions on a map, vehicle speed, ride, route, etc.



**04**

**PIXEL's video surveillance system is compliant with the following standards:**

**PN-EN 50155:2018-01**

**Railway applications.**  
Rolling stock. Electronic equipment.

**ON-EN 45545**

**Railway applications.**  
Fire protection on railway vehicles.



**05**

**Supports up to 26 cameras!**

**06**



